

Energy efficient QoS multicast routing for varied services in wireless cellular ad-hoc network

Sridhara S.B.¹, Dr. Ramesh B.²

¹ Assistant professor Dept. of electronic and communication, Rajiv Gandhi institute of technology, VTU. Bangalore, India

² Professor Dept. of computer science and engineering, Malnad College of engineering, VTU. Hassan, India.

¹ Sridharasb1947@gmail.com, ² Sanchara@gmail.com

Abstract

Wireless cellular Ad hoc network is a group of wireless mobile devices or gadgets that form a network structure without a wired infrastructure. The recent advancement of smart phone technology has produced varied application service that requires efficient Quality of Service (QoS) technique. The enormous mobility of users as led to the network topography of Wireless cellular infrastructure changes very fast, which result in difficulty to find the route that message packets use in cellular ad-hoc network. An infrastructure with QoS support is a crucial factor for multimedia services in Wireless cellular network. The current applications services have strict requirements on data rate, link selection ratio, cost and other QoS factors. In this approach the author use organized affirmation control scheme based on prioritization for varied services is implemented to enhance D2D (Device to Device) communications into cellular network to overcome the limitations of mobile ad-hoc network. The simulation has been conducted for various parameters such as slot utilization and energy efficiency and the results show that the proposed methodology can significantly enhance the performance of proposed routing for varied application in cellular ad-hoc network in order to enhance device battery life and overall network proficiency. The architecture shows that D2D communications is forming an ad-hoc structure in cellular network to provide a significant improvement in QoS efficiency for varied services and also enable overall network capacity performance by individual user's energy optimization.

Keyword: Traffic engineering, D2D, Multicast routing, QoS, Network graph pre-processing.

1. INTRODUCTION:

Wireless cellular ad-hoc network infrastructure is a progressively re-configurable remote system with no settled structure. In such a system, every cell phone or devices works as a host as well as a switch and it can change in any heading. Such systems have as of late drawn huge attention and scope consideration since they offer interesting advantages and flexibility concerning transfer speed spatial reuse, natural adaptation to non-critical failure and minimal effort fast deployment. Keeping in mind the end goal to encourage correspondence inside of the system, a directing routing is utilized to find courses between hubs [1]. The essential objective of such an system routing prototype is to give an effective course foundation between a couple of hubs so that messages may be conveyed in an energy efficient way. Route construction ought to be finished with at least overhead and transfer speed utilization.

The expanding popularity of communitarian interactive media applications is empowering the backing for multicast correspondence. Multicasting

assumes a critical part in wireless cellular ad-hoc systems when solicitations must transmit the same information to more than one device. Multicasting encourages transmission capacity sparing, diminished deferrals and high adaptability. The majority of ordinary multicast conventions were intended for best-exertion information movement [3]. They develop multicast trees fundamentally in light of availability. Such trees are unsuitable when QoS is considered because of the absence of assets. QoS is harder to ensure in wireless cellular systems than in other sort of systems, in light of the fact that the remote data transmission is collective among neighbouring hubs and the system topography changes as the devices move. With the broad uses of remote cell ad-hoc system in numerous spaces, the suitable QoS measurements ought to be utilized, for example, data transfer capacity, delay, data rate loss and cost for finding multicast root [4]. Mobility forecast has likewise been connected to focus the term of life time between two joined portable hubs utilizing GPS [2].

It is understood that, Internet Protocol (IP) multicast is for the most part not considered as down to earth in

light of the fact that it requires router switch updating over the entire system. Then again, in wireless cellular network, multicast is a practical and affordable strategy because the provider can have a control of all the routers in the cellular infrastructure. Multicast solicitations in wireless cellular network for the most part require ensured QoS, so it is pivotal to plan QoS multicast association plans for wireless cellular networks.

The multicast association plans has tended to predominantly for wired systems. The majority of these research concentrated on creating heuristic calculations that can locate a close ideal tree for a solitary multicast association, taking into account the present system state, under specific QoS limitations [5]–[12]. These calculations, be that as it may, have not tended to the multicast issue from the activity designing point of view; in this manner can barely accomplish the ideal execution in wireless cellular environment. For example, if a calculation tries to improve the asset use of a solitary multicast session without considering the general movement burden design in wireless cellular ad-hoc network, then some remote connections may be exceptionally congested, while numerous different connections may be essentially not utilized properly. To cater this author chip away at the movement designing upgrade for QoS multicast association to mark the superlative utilization of system resource crosswise over wireless cellular networks. Before, traffic engineering expansion has been used for unicast association in wired systems [13]–[18]. By the by, those methodologies were outlined just for a specific unicast steering convention, i.e., QoS-OSPF. Since QoS-OSPF directing convention is not pertinent to multicast system, those methodologies are not ready to traffic engineering capacity in multicast scenario.

In this paper, the author propose an efficient network graph processing considering varied services way to deal with empower traffic engineering designing by estimating traffic load of varied services, and improve the execution of energy proficiency regarding system life time by QoS provisioning, to address fare multicast routing issue considering varied traffic for varied services in wireless cellular adhoc network. This methodology fused the selective affirmation control plan to communicate D2D interchanges into cellular system to conquer the restrictions of wireless ad-hoc network. Here the author design productivity-constrained adaptive selectivity gain strategy in affirmation control which is an essential capacity for the procurement of QoS as it figures out which data is

permitted to enter and which packet is not permitted to go into the system. The choice may be in view of numerous variables, for example, what may be the result of permitting a packet to go into the system. The approach is improving the evaluated system execution which is picked up from offloading cell movement onto D2D structural engineering.

This paper presents an efficient QoS multicast routing protocol by enabling traffic engineering using network graph pre-processing for varied services to meet the QoS requirement of a wireless cellular infrastructure. The rest of the paper is organized as follows. Literature survey is presented in the next section. In section 3 explains the proposed QoS aware multicast routing model for varied services. In Section 4 the simulation results are presented. The paper concludes with the last section 6.

2. LITTERATURE SURVEY

A Wireless cellular infrastructure is a group of wireless mobile hosts that makes a momentary network with or without a centralized management or wired infrastructure. Due to the frequently movement of nodes, the network topology of Wireless cellular ad-hoc network varies very fast, it is very complicated to establish the routes that message packets use in cellular ad-hoc network. Network control with QoS awareness is a main matter for multimedia services in Wireless cellular ad-hoc network. Bandwidth, delay, computation cost, packet loss ratio, and other QoS metrics has affect the all real time application. Here the authors find and survey some of existing protocol that has been developed to improve QoS in ad-hoc infrastructure which is shown below

G. Santhi[19]here they analysed , an ad-hoc infrastructure routing strategy has main goals to deliver an well-organized route instituting between a pair of devices due to which packets may be sent in appropriate time. Construction of route should be done with least overhead and data rate consumption is also low. Here the Author did not explain anything about how mobile prediction scheme going to works for multiple multicast trees.

Sankar M S [20] has presented the Multicasting on the basis of Time Reservation by the use of Adaptive strategy for Energy efficiency. They used MMC-TRACE which is based on a cross layer design where the network and mac layer functionality are processed in a solitary combined layer design. The simple proposal of the infrastructure is to form and retain a

dynamic multicast tree enclosed by a passive mesh inside a mobility base ad-hoc infrastructure.

K.Srinivasa Rao [21] with other teammates presented a MANET (mobile ad-hoc network) which is without any infrastructure with mobile devices. It forms a multicast tree routed at the mobile source device, by comprising the devices with greater enduring energy towards the receiver's devices. In the next phase, an affirmation pattern in which a multicast flow is acknowledge or forbidden it depends upon the output size of queues. In the end regulates the multicast load ratio at each block of a multicast tree.

Viet Thi Minh Do [22] Providing Quality of Service in ad-hoc infrastructures has a big problem due to the wireless standard and the frequently mobile nature of devices. In the normal operation wireless channel contain an issue to loss of packet. Often the medium access layer offers a mutual common channel for devices in the location between the users. In addition to this the range of transmission interference may be greater than that of transmission range. This is the reason successful transmission may depend upon the topology and traffic load at neighbouring node. Here the Author only focuses on developing the likely options in the design space. The author believes that future designs should take an application viewpoint when designing affirmation control.

Dr. M .Rajanbabu [23] Multicasting is intended to disperse information to an arrangement of assigned recipients. This is not matter where the area is or what number of individuals in a host group. Group part may join and leave group whenever relies on their needs, that is the reason they are called dynamic hubs. Multicast bundles are conveyed to every individual from a multicast group with unwavering quality and execution as unicast parcels to every part. Multicast gatherings may be of irregular size, may change affiliation powerfully, and may have either a worldwide scope. In remote medium, it is discriminating to bring down the correspondence overhead and force utilization. Multicasting can propel the remote's productivity join when exploiting so as to send various duplicates of messages the inalienable show property of remote transmission. Henceforth, energy productive routing demonstrates a noteworthy part in MANETs. Contrasting to multicast association and wired multicast association protocols, for MANETs must talk a changed scope of problems because of the qualities of, for example, low data transfer capacity, portability and low power. MANETs convey lower data transmission than the

wired systems. Besides, their plan does not force any huge changes on the scheduling and queuing arrangements of current systems, and the data social affair amid the advancement of a routing table is additionally costly.

Tolga Numanoglu[24] developed tree based multicasting convention known as Multicasting through Time Reservation by using Adaptive strategy for Energy efficiency (MC-TRACE) and relate the execution of versatile repetition multicasting against its non-versatile variant and a non-versatile cross section based directing convention, On Demand Multicast Routing Protocol (ODMRP) called versatile excess calculation. Versatile excess can protect high parcel conveyance proportions at more prominent convention efficiency when contrasted with both non-versatile work and tree-based multicast conventions. This work had a few disadvantages like low quality of very repetitive ODMRP can be improved by the overhauling of parameter occasionally as indicated by the channel conditions. Adjusting repetition to current channel circumstances status will permit multicast conventions to be more responsive and give a perfect exchange off in the middle of QoS and efficiency.

It is observed and quiet evident from the literature that still multicast routing and traffic engineering, with QoS required much more consideration so that the routing system must be robust, exploit packet delivery ratio and adapt vigorously to changes in load in traffic in wireless cellular network environment. Here the author proposes a QoS aware multicast routing system with an efficient network graph pre-processing that ensures QoS guarantees for varied services such as energy efficiency, throughput and link selection ratio with minimum cost.

3. PROPOSED SYSTEM:

In this work the author use network graph pre-processing based selective admission control (SAC) which accept or deny user affirmation considering their data rate necessities and their present state of extraordinary connection. To express the SAC problematic, the author applies the subsequent strategy.

Firstly, let BW be the total data rate capability of a specified extraordinary connection, and M be the available service class number that share the data rate of the system. The service s load, the authors expect that the demands come from an arbitrary route with a mean speed γ_s , and the mean service access time allotment is $1/\mu_s$ seconds. Let $x = (x_1, x_2, \dots, x_M)$ be

the state vector of system, where x_s is the service associate number s in the wireless cellular infrastructure. Let consider the requirement of data rate of a service s association is static to n_s , and data rate prerequisite vector can be denoted as $n = (n_1, n_2, \dots, n_M)$. In order to provide elasticity for varied services varied selectivity's, the author express the selectivity vector as $x = (p_{v1}, p_v, \dots, p_{vM})$, where p_{vs} specifies the selectivity weight enforced on the s th service pattern.

Let consider $\omega CS = \{x\} \cdot n \leq BW$ which denote the set of practically available system states in an infrastructure. Subsequently, a SAC policy, represented by ω , is depicted as a subjective subgroup of ωCS . Assumed ω , an association invitation is established only when the state vector remains in ω after the association is accepted.

Proposed SAC design strategy

Adaptive selective affirmation strategy: As above-mentioned, the SAC strategy is projected to provide first choice to associations with high data rate. To succeed the authors design an efficient adaptive selective affirmation strategy. To define the proposed strategy, the authors express the selective gain vector as $x = (v_1, v_2, \dots, v_M)$, where $v_s = p_{vs} n_s$ is the mean selectivity reward produced by accommodating a sum of service s association. therefore the long-run mean selectivity reward procured of a specified strategy ω is specified as

$$NG(\omega) = \sum_{x \in \omega} (x \cdot v) P_{\omega}(x), \quad (1)$$

Here $P_{\omega}(x)$ is probability or possibility of steady state when network is in state x .

Here the authors consider $\omega\Psi$ that represent the adaptive selectivity reward strategy that can yield the utmost significant of $NG(\omega)$. Here the selectivity gains $NG(\omega)$ is engaged as a selectivity criteria to reproduce the capability of offering varied selectivity constructed on the selectivity vector p_v . Here $\omega\Psi$ is having the finest QOS enactment among the cumulative strategy in process of assuring varied selectivity built on p_v . The adaptive selectivity accumulated bonus methodology is comparable to resolving the problem which is explored in the [25]–[31]. In fact, in the novel stochastic knapsack problem v_s shows the mean profits produced by set of service s association.

Productivity inhibited adaptive selectivity reward strategy:

Further the common worry of varied selectivity, there are many other problems that has to be considered once scheming a SAC strategy for efficient cellular infrastructure pre-processing. In order to decrease the usage of data source, the SAC should guarantee tall productivity on extraordinary connections. Now the author expresses the numerical data rate that strategy ω can attain is

$$SBW(\omega) = \sum_{x \in \omega} (x \cdot n) P_{\omega}(x), \quad (2)$$

Considering the bonus accumulated for selectivity vector v in Equation (1) is swapped considering data rate procurement vector n . Now productivity of strategy ω is assumed as

$$U(\omega) = \frac{1}{SBW} \sum_{x \in \omega} (x \cdot n) P_{\omega}(x), \quad (3)$$

In this work the authors describe the adaptive productivity strategy $\omega\phi$ as a strategy that produces best productivity. Evidently when entire services have the equivalent selectivity weight ($p_{v1} = p_v = \dots = p_{vM}$), $\omega\phi$ is equivalent to $\omega\Psi$.

Now the author estimate and find suitable SAC strategy for wireless cellular infrastructure pre-processing, a trade-off has to be done amid productivity and selectivity reward accumulation. Thus, the author adds productivity limitation to adaptive selective reward strategy, and helps to the productivity constrained adaptive selectivity reward strategy $\omega U\Psi$. In this work the productivity limitation needs that of the productivity of SAC strategy should be greater of than $LBU = lbU(\omega\phi)$, and LBU is the lower bound of productivity lbU ($0 \leq lbU \leq 1$) is Productivity lower bound factor, $U(\omega\phi)$ is productivity of $\omega\phi$.

Resemblance strategy for SAC

Here to precisely discover $\omega\Psi$, $\omega\phi$ and $\omega U\Psi$, brute-force search method can be applied. Precisely, to discover $\omega\Psi$, first evaluate the long-run mean selective reward accumulation of every possible strategy through Equation (1). Similarly, the productivity of every possible strategy is evaluated by Equation (3) to find $\omega\phi$. To find $\omega U\Psi$ both long-run mean selectivity and productivity of every probable strategy have to be evaluated. However literature shows that the unbearable complication involved in brute-force technique [25], [27]. Though adaptive strategy can be seen they are bit problematical, and as a result practically it is challenging to be employed owing to the bulky data procurement necessity. As a result, much developer attempted to develop or use

simple structured fairly accurate way out. For instance, [25] developed FSPA (finite stage programming algorithm), that result in complication of $O(B2M)$, to search the Complete Partition (CP) structured adaptive strategy for the knapsack problematic. Here, the complication is evaluated by searching space size that a strategy has to discover [25]. Next the author propose a two complete partition structured adaptive procedures that have a complication of $O(BM)$.

Adaptive Algorithm to ResembleCPΨ:

To accurately find CPΨ in the search space of complete partition strategies, a FSPA with complication of $O(B2M)$ is shown in [25]. In this work the author develop an efficient adaptive procedure to resemble CPΨ with reduced complication. Based on [32], the service s load, the packet traffic conceded by rth server in M/M/N/N queuing scheme is expressed by

$$LRs(r,ps)=ps[BW(r-1,ps)-BW(r,ps)], 1\leq r\leq R_s. \tag{4}$$

Therefore the selectivity gain carried by rth server is specified as

$$NGRs(r,ps)=vsLRs(r,ps)=vsps[BW(r-1,ps)-BW(r,ps)], \tag{5}$$

Where the relation $NGs(CP)=r-1RsNGRs(r,ps)$, hold Based on Eq. (5) the author expresses the rth server selectivity gain ratio is as follows

$$gRs(r,ps)=NGRs(r,ps)bs=rsps[BW(r-1,ps)-BW(r,ps)]bs. \tag{6}$$

Since $LRs(r,ps)$ is declining in r [34], $NGRs(r,ps)$ and $gRs(r,ps)$ are declining in r too. Based on above equations, here the author presents an adaptive algorithm to resemble CPΨ in Algorithm 1.

Algorithm 1

1. $BW_{free}=BW$; $I=M+1$;
2. for all $s(0\leq s\leq M):BWCPs=0;BW(1, ps)=ps1+ps; gRs=vsps[1-BW(1, ps)]/ns$
3. Where $A>0$ do
4. $A=\arg \max 1\leq s\leq M\{gRs\}$;
5. if $n1\leq BW_{free}$ then
6. /* allocate nA data rate resource to Service A traffic */
7. $BW_{free}= BW_{free}-nA$; $BWCPA= BWCPA+nA$; $RA=RA+1$;

8. $BW(RA+1, ps)=\rho ABw(RAps)RA+1+psBW(R, ps)$; $gRA=vApA[BW(RA+1, ps)-BW(RA+1, \rho A)]nA$;
9. else
10. $gRA=0$;
11. if $s=1MgRs=0$ then
12. $A= -1$; // data rate provision is completed.
13. End if
14. End if
15. End while
16. return $\{BWCPs, 1\leq s\leq M\}$ as the final data rate provision decision;

To develop the adaptive selectivity gain policy a greedy method is iteratively being applied in algorithm 1. For example in algorithm 1 Step 2 and 8 initialize and update selectivity gain rates of varied services respectively, after this Step 4 select the ones with supreme selectivity gain rate (maximum). Before reaching step 10 The Algorithm 1 can find CPΨ. The approximation error may occur due to iteration process in finding when data rate capability boundary condition $BW_{free}=\max 1\leq s\leq M\{ns\}$ becomes true. If data rate capability boundary condition holds, the greedy approach cannot be realised systematically due to the memory constrained that restrict with the procedure of detecting the service of best selectivity gain rate. Related to CPΨ, the selectivity gain error processed by Algorithm 1 can be sternly restricted by the subsequent disparity.

$$NGerr<NG(CP\Psi, BW) \quad NG(CP\Psi, BW-\max 1\leq s\leq M\{ns\}), \tag{7}$$

Where $NGerr$ stances for the selectivity gain error and $NG(\omega, D)$ stances for the selectivity gain acquired from strategy ω with data rate capability D . Evidently, it exist $O(B)$ iteration process in adaptive strategy for CPΨ. In every stage, this strategy examines over M probable states of network to find service that produces the best selectivity gain ratio. Thus $O(BM)$ is the complication of the adaptive strategy. In element, the complication of adaptive strategy stances for calculating rate on a solitary extraordinary connection in our wireless cellular pre-processing methodology of network graph. The complete complication of the overall network is $O(BM)$ multiplied by sum of extraordinary connection in the wireless cellular infrastructure.

Adaptive Algorithm to Resemble CPUΨ:

The productivity restriction needs that of the productivity of an SAC strategy should be greater than that of lower bound $LBU=lbUU(\omega\phi)$. Therefore, before developing an adaptive strategy to resemble

CPU Ψ , we must first discover $\omega\phi$ to compute CPU Ψ and LBU. It is observed that the $\omega\Psi$ turns into $\omega\phi$ when each and every services of load has the equal selectivity weight. The outcome of the adaptive strategy for CP Ψ is used to discover CP ϕ and finally attain the resemblance cost of LBU, if the author fixed the service selectivity vector as $pv_1 = pv_2 = \dots = pv_M$ or $vs = ns$ ($s=1,2 \dots M$), in the beginning process.

Based on Algorithm 1, for service s load, the author expresses r th server statistical data rate fetched as

$$SBWR_s(r, \rho_s) = nsLR_s(r, \rho_s) = nsps[BW(r-1, \rho_s) - BW(r, \rho_s)], \quad (8)$$

Where the relation $SBW_s(CP) = r = 1R_s SBW_s(r, \rho_s)$ holds.

Therefor the r th server productivity is specified as follows

$$UR_s(r, \rho_s) = SBW_s(r, \rho_s) ns = LR_s(r, \rho_s) = ps[BW(r-1, \rho_s) - BW(r, \rho_s)]. \quad (9)$$

Based on the discussions presented above here the author presents an adaptive strategy to resemble CPU Ψ in Algorithm 2.

Algorithm 2

1. Input lbU for utility constraint
2. $BW_{free} = BW; A = M + 1;$
3. for all s ($0 \leq s \leq M$); $BWCP_s = 0; R_s; BW(1, \rho_s) = ps_1 + ps; gR_s = vsps[1 - BW(1, \rho_s)]; UR_s = ps[BW(1, \rho_s)];$
4. $SetU = \phi;$ // the set of services that are fit for productivity constraint.
5. $Uref = \max_{1 \leq s \leq M} \{UR_s\};$ // it is the productivity constraint reference.
6. While $A > 0$ do
7. $SetU = \{s | s \text{ satisfies } UR_s > lbU Uref\};$
8. $A = \arg \max_{s \in SetU} \{gA_s\};$
9. if $nA \leq BW_{free}$ then
10. /* allocate nA data rate resource to service A traffic */
11. $BW_{free} = BW_{free} - nA; BWCP_A = BWCP_A + nA; RA = RA + 1; BW(RA + 1, \rho_A) = \rho_A BW(RA, \rho_A) RA + 1 + \rho_A BW(RA, \rho_A); gRA = v_A \rho_A [BW(RA + 1, \rho_A) - BW(RA + 1, \rho_A)] nA; URA = \rho_A [BW(RA, \rho_A) - BW(RA + 1, A)]$
12. Locate CP ϕ by iteratively running Algorithm 1 with equal selectivity weights and unlimited data rate capacity, until the allocated data rate is just equal to or greater that $(BW - BW_{free});$
13. Set Uref to be the last gRA in the above CP ϕ iterations;
14. Else

15. /* allocate nA data rate resource to service A traffic */
16. $gRA = 0; URA = 0;$
17. $lbU = 0;$ // To apply greedy technique.
18. if $s = 1 M gR_s = 0$ then
19. $A = -1;$ // data rate provision is finished
20. End if
21. End if
22. End while
23. Return $\{BCPs, 1 \leq s \leq M\}$ as the final data rate provision decision.

To firmly assurance the productivity restraint, the above strategy finds CP ϕ and CP Ψ concurrently. The searching procedure of CP ϕ is at all times a step ahead of the probing procedure of CP Ψ , meanwhile CP ϕ is used as the reference to gratify the productivity restraint as shown in 12 and 13 step of algorithm 2. In beginning process the author just fix the productivity reference Uref as the highest URs of CPU Ψ finding, that equivalent to the CP ϕ productivity reference in the preliminary round of searching. Once accomplishing the productivity reference restraint, from Step 7 the author build SetU that encompasses all the services to assure productivity restraint. To attain good selectivity gain, in step 8 it uses greedy technique to choose from SetU the services of best selectivity gain ratio. Evidently, this approach has similar difficulty as in Algorithm 1.

Traffic load estimation for varied services

The load for varied service on extraordinary connection must be identified in order to process infrastructure graph. For a particular extraordinary connection Spl , the traffic burden of service s is denoted as $psSpl = \gamma_s Spl / \mu_s Spl$ ($1 \leq s \leq M$). In general, $psSpl$ varies with respect to time. Due to this there is a necessity to design a model to evaluate $psSpl$ intermittently. Here the authors present to evaluate varied service traffic burden approximation using complete partition SAC strategy. Secondly the author presents how a way to approximation the packet burden density for varied service for a given extraordinary connections.

Traffic Load Estimation with Complete partition Selective Admission Control Strategy:

Existing research sturdy show that many light weight approaches has been developed to address packet load approximation with low structure cost and high effectiveness [34]–[36]. Here the author adopts the methodology of [37] to counterpart the complete partition structured adaptive that has been developed.

The complete partition structure can be divided into a collection of self-determining or individual sub-strategies due to the distinctive feature of subdividing. Furthermore, the sth sub-policy is been seen as an M/M/N/N queuing scheme, with data rate transmission capacity $R = BWCPs/bs$ and traffic load ρ_s .

To calculate ρ_s , the author proposes the approach of MLE (maximum likelihood estimation) [36], [37]. Considering a complete partition strategy, consider that there are $x_s(t)$ service type s connections in the network at time t and the probability is given as follows

$$P(x_s(t), \rho_s) = \frac{\rho_s^{x_s(t)} (1 - \rho_s)^{r - x_s(t)}}{r!} \quad (10)$$

Suppose H individual samples of $x_s(t)$ are collected during each time interval I to accomplish a sample vector $x_s(t) = [x_s(t_1), x_s(t_2), \dots, x_s(t_H)]$. Thus we have

$$P(x_s(t), \rho_s) = \rho_s^{1Hx_s(th)} (1 - \rho_s)^{r - 1Hx_s(th)} \quad (11)$$

To formulate the equation of maximum likelihood estimation, the subsequent equation must hold

$$\frac{\partial}{\partial \rho_s} \log(P(x_s(t), \rho_s)) = 1Hx_s(th) - \frac{r - 1Hx_s(th)}{1 - \rho_s} = 0 \quad (12)$$

Where P_{ms} is the probability of acceptance of service s packet and can be calculated by $P_{ms} = \text{Accepted service } s \text{ traffic} / \text{All service } s \text{ traffic} = (1 - P_{ns})$ based on this we have

$$\rho_s = \frac{1Hx_s(th)}{r - 1Hx_s(th)} (1 - P_{ms}) \quad (13)$$

The Estimation of traffic load on exceptional or selective Connections:

The Packet burden on extraordinary connection Spl is represented as ρ_{sSpl} ($1 \leq s \leq M$). Then evaluate ρ_{sSpl} with complete partition strategy, and then the author measure $x_{sSpl}(t)$ and ρ_{msSpl} , that is precise circumstances of $x_s(t)$ and ρ_{ms} on connection spl . Though $x_{sSpl}(t)$ is practically possible and is collected on the system devices, ρ_{msSpl} is tough to be measured directly. The goal is that, even though SAC strategy on extraordinary connection spl admits the invitation, the multicast association may not allow connection

Spl due to energy efficient routing strategy. Precisely it is practically possible to measure the entire network service s packet, but it is difficult to predict packet load is imposed on connection spl , subsequently the proposed strategy resolves where the packet randomness considering varied factors. To resolve this following proof is designed.

Preliminary 1: Consider Q_s be service type s connection request, and $NGpre(Q_s)$ be the pre-processed graph of the network for Q_s . Thus we obtain

$$P_{msSpl} = P\{\text{link } Spl \in NGpre(Q_s)\} \quad (14)$$

<p>Proof of above equation $P_{msSpl} = P\{\text{link } Spl \in I(Q_s)\} P\{Q_s \text{ is the traffic load on link } Spl\}$ $= P\{\text{link } Spl \in I(Q_s)\} P\{\text{link } Spl \in I(Q_s) \text{link } Spl \in NGpre(Q_s)\}$ $= P\{\text{link } Spl \in I(Q_s)\} P\{\text{link } Spl \in I(Q_s), \text{link } Spl \in NGpre(Q_s)\} / P\{\text{link } Spl \in NGpre(Q_s)\}$ $= P\{\text{link } Spl \in I(Q_s)\} P\{\text{link } Spl \in I(Q_s)\} / P\{\text{link } Spl \in NGpre(Q_s)\}$ $P\{\text{link } Spl \in NGpre(Q_s)\}$</p>	<p>(15)</p>
--	-------------

Where, $I(Q_s)$ is assured QoS of multicast tree for Q_s if Q_s is acknowledged in the wireless cellular infrastructure; $P\{\text{link } Spl \in I(Q_s)\}$ is probability that Q_s is acknowledged in the network and connection Spl that is involved in multicasting.

Preliminary1 shows that the capacity of P_{msSpl} that can be transformed to the capacity of $P\{\text{link } Spl \in NGpre(Q_s)\}$, which is easy and better way to process in the phase of pre-processing of network in wireless cellular ad-hoc network.

4. SIMULATION RESULT AND ANALYSIS:

The system environment used is windows 10 enterprises 64-bit operating system. Authors have used dot net general purpose simulator which is based on C# 6.0 programming and used dot net framework 4.0 visual studios 2010 and conducted simulation study on following parameter for slot/link selection, Throughput efficiency and energy efficiency for varied services and compared the proposed energy efficient QoS PAC model for varied services with

existing D2D (Device to Device) protocol. To support QoS provisioning based on IEEE 802.11 wireless cellular infrastructure. In order to provide efficient delivery of content such as real-time medical or conference live high definition video streaming requires strong QoS support. Different types of services have different types of traffic flows as follows: - Unsolicited grant service (UGS) which require constant bit rate traffic example voice over IP (VoIP), Real-time polling service (rtPS) which require real-time service flows that generate packet of variable size on a periodic basis (e.g., MPEG video). Non-real-time polling service (nrtPS) is intended to provision non-real-time provision flows that require variable data size grant burst types on a regular basis example high bandwidth FTP and lastly Best effort (BE) that supports facilities that do not require guarantees of QoS example Web and email data.

Slot success ratio analysis

From figure 1 the simulation result show that the proposed PAC model improved by 12.5%, 10.7%, 10.4% and 9.3% for varied services such as UGS, RTPS, NRTPS, BE respectively over existing D2D model and it is also found that UGS has the better slot selection ratio among all the service and BE has Least performance in term of Slot selection ratio from this we can conclude that UGS has the higher selectivity whereas BE has the least selectivity.

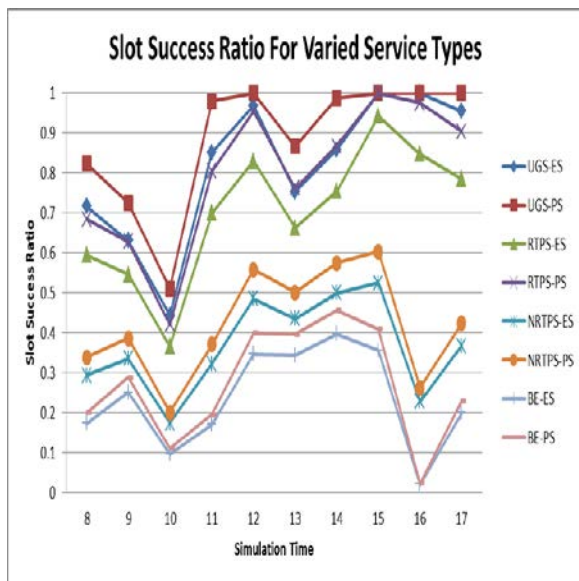


Figure 1:

From figure 2 the number of users varied from 6, 12, 18 and 24 and the simulation result show that the proposed PAC model improved by 13.8%, 11.8%, 10.6% and 10.1% for varied services such as UGS,

RTPS, NRTPS, BE respectively over existing D2D model.

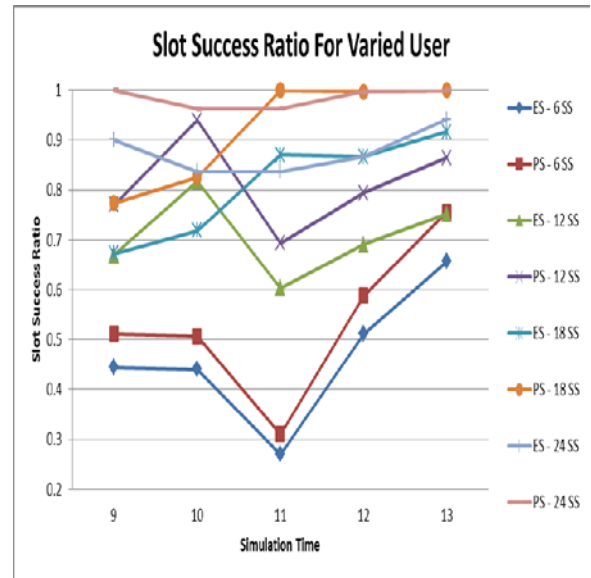


Figure 2

Throughput analysis

In figure 3 the throughput efficiency for varied service is analysed and the simulation result show that the proposed SAC model improves the throughput efficiency by 1%, 8.11%, 8.14%, 8.22% respectively over existing D2D mode

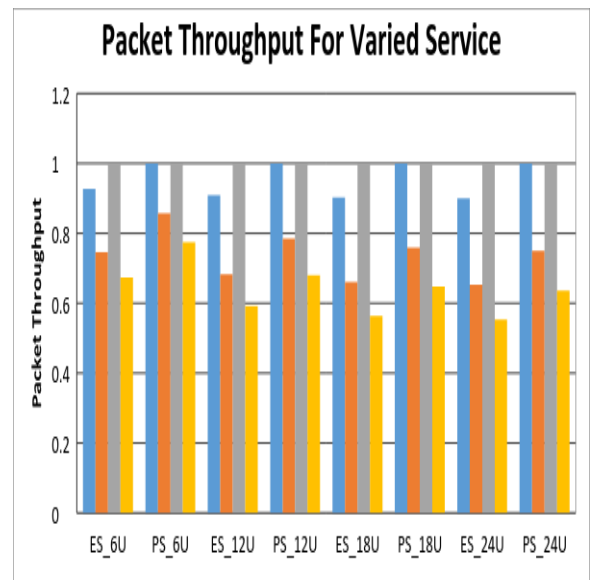


Figure 3

Figure 4 the Average throughput efficiency of all the service is analysed by varying the number of user from 6, 12, 18, 24 and 30 and the simulation result show that the proposed PAC model improves the average throughput efficiency by 7.56%, 8.32%,

8.54% and 8.48% respectively over existing D2D mode

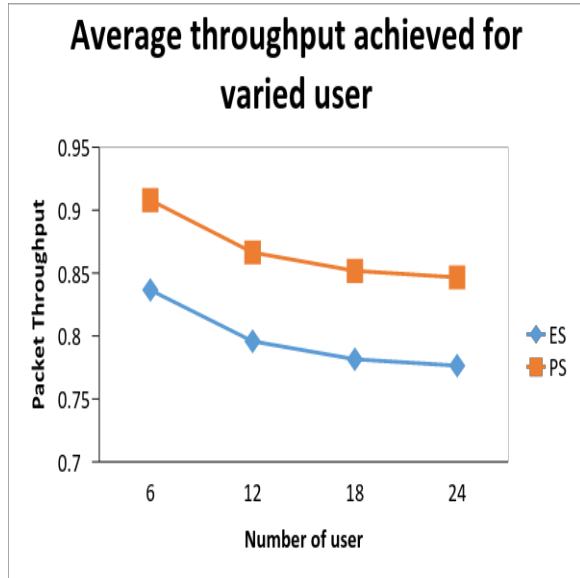


Figure 4

Energy Efficiency

From figure 5 it shows the network energy efficiency by varying the number of user from 6, 12, 18 and 24 and the simulation result show that the proposed SAC model improves the network energy efficiency by 21.62%, 22.35%, 24.32% and 24.21% respectively over existing D2D model.

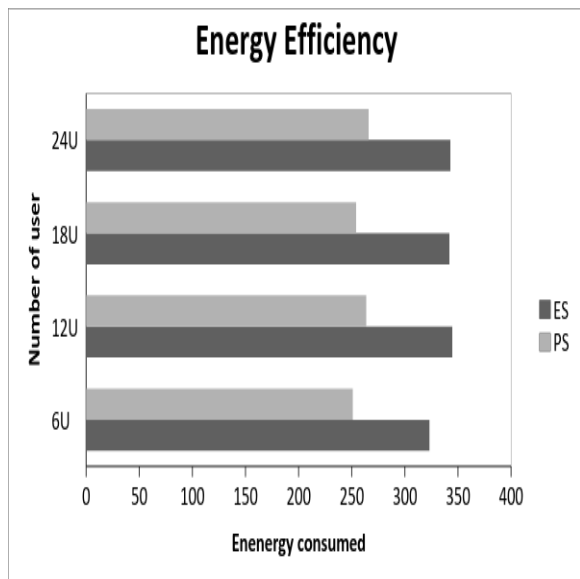


Figure 5

The figure 6 it shows the network energy efficiency for varied services and the simulation result show that the proposed SAC model improves the network energy efficiency by 22.72%, 24.35%, 25.12% and

24.21% for varied services such as UGS, RTPS, NRTPS, BE respectively over existing D2D model.

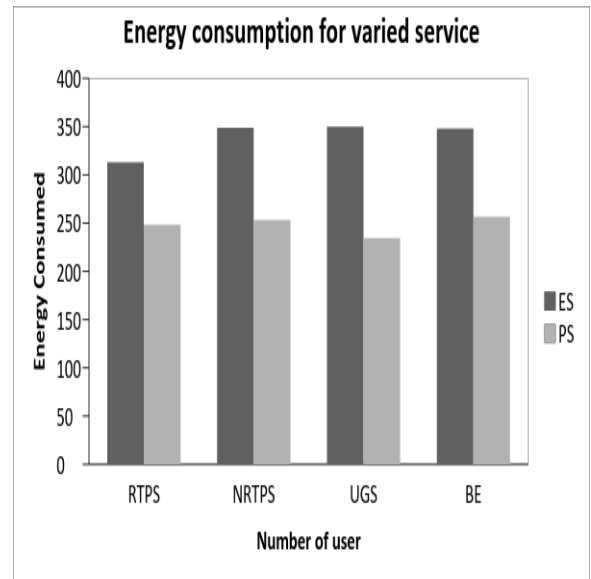


Figure 6

5. CONCLUSION:

Here In this work an enhanced Traffic Engineering model for varied application service is proposed and implemented to increase the overall performance efficacy of proposed multicast QoS association strategy for varied service in D2D wireless cellular ad-hoc environment. Particularly, the author has projected a new method by pre-processing network infrastructure graph for varied application service load based on organized affirmation control by using productivity based adaptive model to accomplish a desired traffic engineering proficiency from the SAC strategy, precisely, a set/group of links is selected from the wireless cellular ad-hoc network as extraordinary connections, where SAC policy is then constructed based on adaptive productivity strategy. An extraordinary connection/Best connection will be detached from the infrastructure graph if the request association does not pass the SAC strategy. Due to this, different user network may have different pre-processed ad-hoc infrastructure graphs, and the packet burden can be circulated equally in the wireless cellular ad-hoc network. The extensive results of simulation shows that our method has obtained satisfactory performance in terms of connection/slot utilization, throughput efficiency and energy efficiency for varied application service such as UGS, RTPS, NRTPS, BE. Further we test our model for other parameter such delay, packet drop etc... and test how the proposed adaptive algorithm can be used in

other network protocol such WiMax, 6lowpan etc.. Since WiMax as broader range of network coverage area and it can provide a better QoS.

6. REFERENCES:

1. Luo Junhai and Ye Danxia, "A survey of multicast routing protocols for Mobile ad-hoc networks", IEEE Communication surveys & Tutorials, vol.11, no.1, pp.78-90, 2009.
2. Xiaoyan ZHU and Jin LIAN, "A QoS multicast routing protocol with mobile prediction based on MAODV in MANETs", International Conference on Computer Science and Software Engineering, 355-357, 2008.
3. E.M. Royer and C.E.Perkins, "Multicast operation of the ad-hoc on-demand distance vector routing protocol", ACM MOBICOM, pp. 207-218, 1999.
4. M. Saghir. T.C Wan, R. Budiarto, "A new cross-layer framework for QoS multicast applications in mobile ad hoc networks", International Journal of Computer Science and Network Security, pp.142-151, 2006.
5. V. P. Kompella, J. C. Pasquale, and G. C. Polyzo, "Multicast routing for multimedia communication," IEEE/ACM Transaction Networking, vol. 1, no. 3, pp. 286-292,1993.
6. G. N. Rouskas and I. Baldine, "Multicast routing with end-to-end delay and delay variation constraints," IEEE Select Areas Communication, vol. 15, no. 3, pp. 346-356, 1997.
7. X. Jia, "A distributed algorithm of delay bounded multicast routing for multimedia applications in wide area networks," IEEE/ACM Transaction Networking, vol. 6, no. 6, pp. 828-837,1998.
8. B. Wang and J. C. Hou, "Multicast routing and its QoS extension: problems, algorithms, and protocols," IEEE Network, vol. 14, no. 1, pp.22-36, 2000.
9. C. P. Low and X. Song, "On finding feasible solutions for the delay constrained group multicast routing problem," IEEE Transaction Computers, vol. 51, no. 5, pp. 581-588, 2002.
10. G. Xue, "Minimum-cost QoS multicast and unicast routing in communication networks", IEEE Transaction Communication, vol. 51, no. 5, pp. 817-824, 2003.
11. M. Charikar, J. Naor, and B. Schieber, "Resource optimization in QoS multicast routing of real-time multimedia", IEEE/ACM Transaction Networking, vol. 12, no. 2, pp. 340-348, 2004.
12. D. Yang, W. Liao, and J. Kao, "Source filtering in IP multicast routing," IEEE Trans. Broadcasting, vol. 52, no. 4, pp. 529-542, 2006.
13. B. Fortz and M. Thorup, "Optimizing OSPF/IS-IS weights in a changing world," IEEE Select Areas Communication, vol. 20, pp. 756-767, 2002.
14. D. Katz, D. Yeung, and K. Kompella, "Traffic engineering extensions to OSPF version 2," Internet Draft, 2002.
15. B. Fortz, J. Rexford, and M. Thorup, "Traffic engineering with traditional IP routing protocols," IEEE Communication Magazine, vol. 40, no. 10, pp.118-124, 2002.
16. S. H. Lim, M. H. Yaacob, K. K. Phang, and T. C. Ling, "Traffic engineering enhancement to QoS-OSPF in DiffServ and MPLS networks," IEEE Proc.-Communication, vol. 151, no. 1, pp. 101-106, Feb. 2004.
17. G. Retvari and T. Cinkler, "Practical OSPF traffic engineering," IEEE Communication, vol. 8, no. 11, pp. 689-691, 2004.
18. Sridharan, R. Guerin, and C. Diot, "Achieving near-optimal traffic engineering solutions for current OSPF/IS-IS networks," IEEE/ACM Transactional Networking, vol. 13, no. 2, pp. 234-247, 2005.
19. G. Santhi and Dr. Alamelu, "Nachiappan Adaptive QoS Multicast Routing with Mobility Prediction in MANETs", 2013
20. Sankar M and Suganthi "ENERGY EFFICIENT MULTICAST ROUTING IN MANET", 2014
21. K.Srinivasa Rao, R. Sudhistna Kumar, P. Venkatesh, R.V. Sivaram Naidu and A. Ramesh "Development of Energy Efficient and Reliable Congestion Control Protocol for Multicasting in Mobile Adhoc Networks compare with AODV Based on Receivers", 2013
22. Viet Thi Minh and Aivind Kure "A Survey of QoS Multicast in Ad Hoc Networks", 2012
23. Dr. M .Rajanbabu, Ms .A.R. Sushma, Ms. B.S. Sowjanya, Mr. B .Suresh kumar, Ms. B. Tejaswini "QoS Parameters of an Energy Efficient Multicast Congestion Control Protocol Over Fading Channels",
24. Tolga Numanoglu and Wendi Heinzelman "Improving QoS in Multicasting through Adaptive Redundancy", 2014
25. K. W. Ross and D. H. K. Tsang, "The stochastic knapsack problem," IEEE Trans. Commun., vol. 37, no. 7, pp. 884-895, 1989.
26. K. W. Ross and D. D. Yao, "Monotonicity properties for the stochastic knapsack," IEEE Transaction Information Theory, vol.36, no.5, pp.1173-1179, 1990.
27. Gavius and Z. Rosberg, "A restricted complete sharing policy for a stochastic knapsack problem

- in B-ISDN,” IEEE Trans. Commun., vol. 42, no. 7, pp. 2375-2379, 1994.
28. E. Altman, T. Jimenez and G. Koole, “On optimal call admission control in resource-sharing system,” IEEE Transaction Communication, vol. 49, no. 9, pp.1659-1668, 2001.
 29. E. L. Ormechi, “Dynamic admission control in a call centre with one shared and two dedicated service facilities,” IEEE Trans. Automatic Control, vol. 49, no. 7, pp. 1157-1161, 2004.
 30. B. C. Dean, M. X. Goemans, and J. Vondrck, “Approximating the stochastic knapsack problem: the benefit of additivity,” in Proc. 45th Annual IEEE Symposium on Foundations of Computer Science, pp. 208-217, 2004.
 31. V. Sarangan, D. Ghosh, N. Gautam, and R. Acharya, “Steady state distribution for stochastic knapsack with bursty arrivals,” IEEE Communication , vol. 9, no. 2, pp. 187-189, 2005.
 32. Jensen, Moe’s Principle. The Copenhagen Telephone Company (K.T.A.S.), Copenhagen, 1950.
 33. R. W. Wolff and C.L. Wang, “On the convexity of loss probabilities,” Applied Probability, vol. 39, no.2, pp.402-406, 2002.
 34. G. Liang, N. Taft, and Bin Yu, “A fast lightweight approach to origin destination IP traffic estimation using partial measurements,” IEEE Trans. Inform. Theory, vol. 52, no. 6, pp. 2634-2648, June 2006.
 35. F. Hao, M. Kodialam, T. V. Lakshman, and H. Zhang, “Fast, memory efficient traffic estimation by coincidence counting,” in Proc. IEEE INFOCOM 2005, vol. 3, pp. 2080-2090, 2005.
 36. R. M. Salles and J. A. Barria, “Proportional differentiated admission control,” IEEE Communication, vol. 8, no. 5, pp. 320-322, 2004.
 37. S. M. Kay, Fundamentals of Statistical Signal Processing: Estimation Theory, Prentice Hall, 1998.